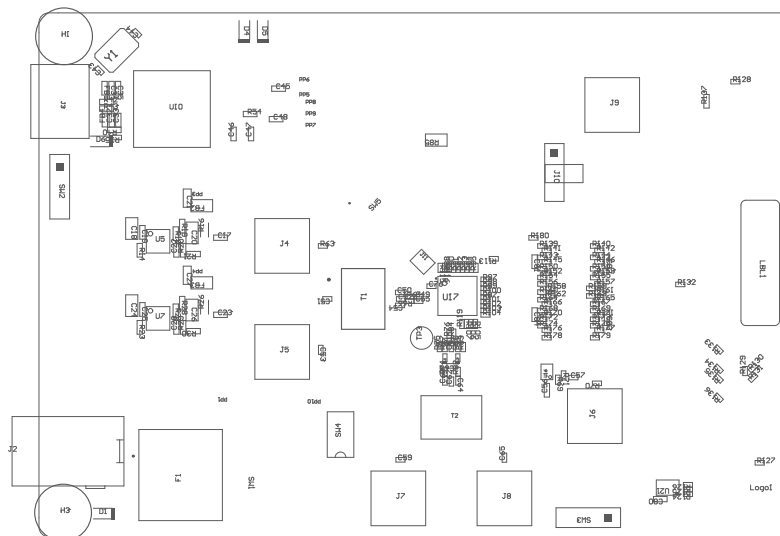


■ These assemblies must be clean and free from flux and all contaminants. Use of no clean flux is not acceptable.



COMPONENTS MARKED 'DNP' SHOULD NOT BE POPULATED.  
ASSEMBLY VARIANT: 002 (ADC3544)

PCB VIEWED FROM TOP SIDE	BOARD #: DC092	REV: G1	SUN REV: a58e6ff928b1c46a2a0dcd37db6576550070a2c5 [Locally Modified]
PLOT NAME = Top Assembly Drawing	GENERATED : 4/9/2025 5:04:32 AM		TEXAS INSTRUMENTS



COMPONENTS MARKED 'DNP' SHOULD NOT BE POPULATED.  
ASSEMBLY VARIANT: 002 (ADC3544)

PCB VIEWED FROM BOTTOM SIDE	BOARD #: DC092	REV: G1	SUN REV: a58e6ff928b1c46a2a0dcd37db6576550070a2c5 [Locally Modified]
PLOT NAME = Bottom Assembly Drawing	GENERATED : 4/9/2025 5:04:32 AM	TEXAS INSTRUMENTS	